

# O402 NEW

+135°  
-20°

PA6  
+G.F.

UL94  
HB

RoHS  
COMPLIANT

## FLAT HINGE WITH LOWERED PIVOT PIN AND THROUGH HOLES

**Material:**  
Reinforced polyamide.  
Resistant to oils and greases.

**Surface finish:**  
Satin.

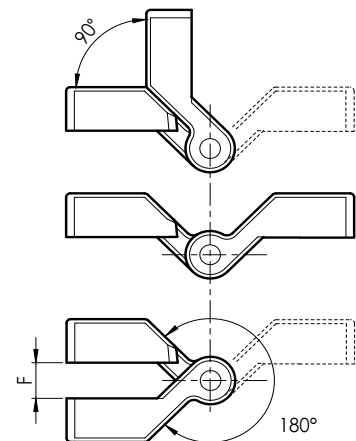
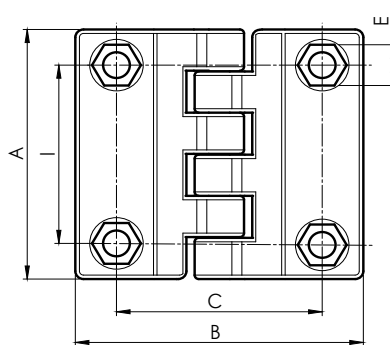
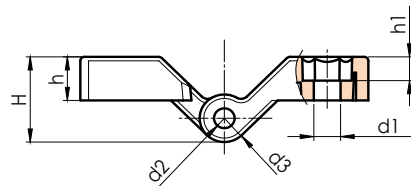
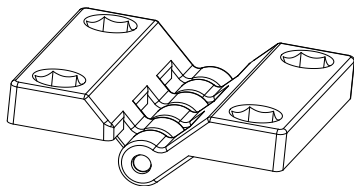
**Colour:**  
Black (RAL 9011).

**Insert:**  
Galvanised steel pin.

**Hole:**  
Through hole obtained by moulding the plastic.  
Hole for hex head screw UNI 5727.

### SPECIAL REQUESTS:

- Upon request and for special quantities available in the colours indicated in the chart on page O-19.



art.	I	C	A	B	E	F	h	h1	H	d2	d3	d1	g	F1 (N)	F2 (N)
O402045.TG06.501	45	50	63	70	10	9	11	6	21,5	5	12	6,5	45	-	-